

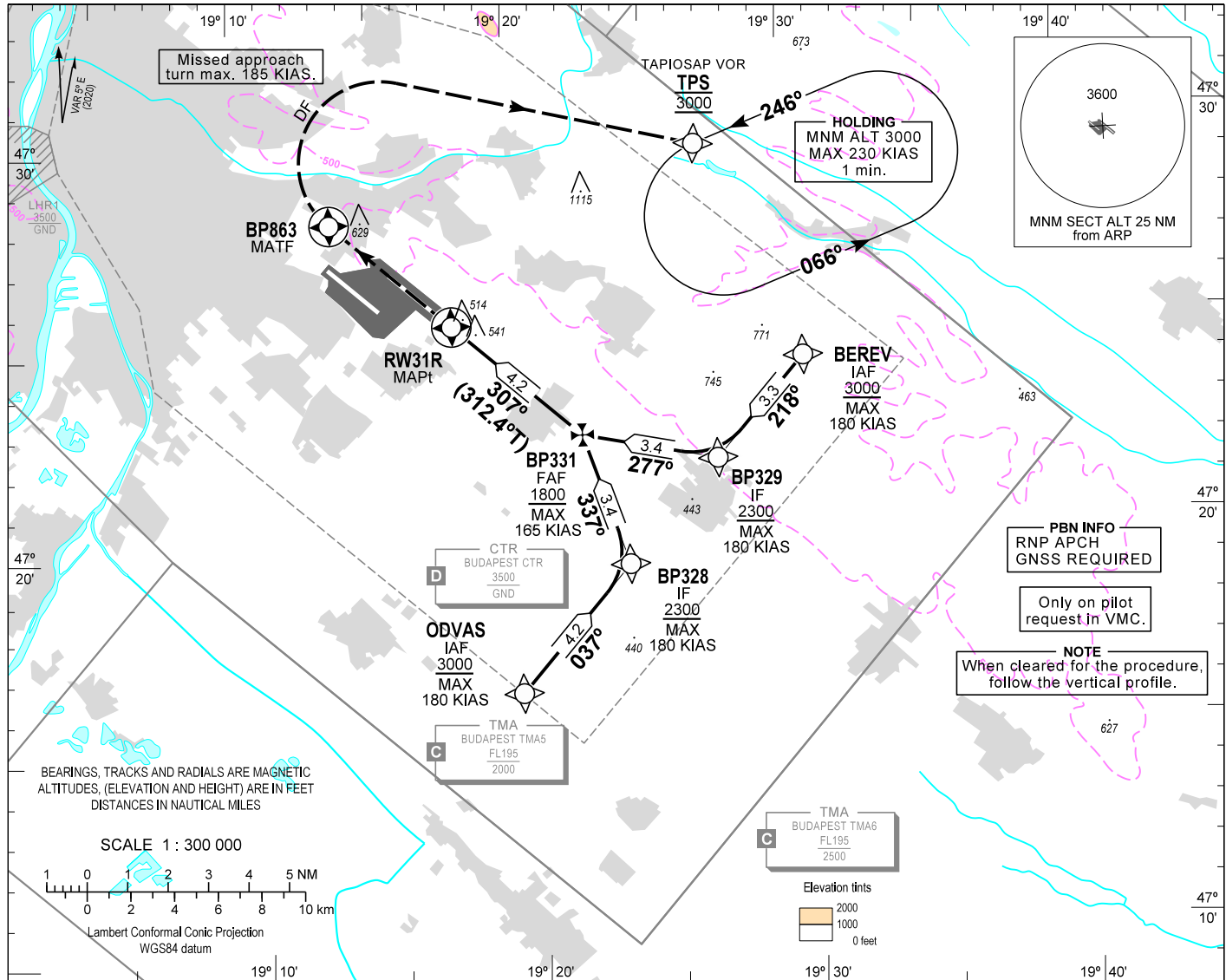
AIP HUNGARY

INSTRUMENT  
APPROACH  
CHART - ICAO

AERODROME ELEV 496  
HEIGHTS RELATED TO  
THR RWY 31R - ELEV 416

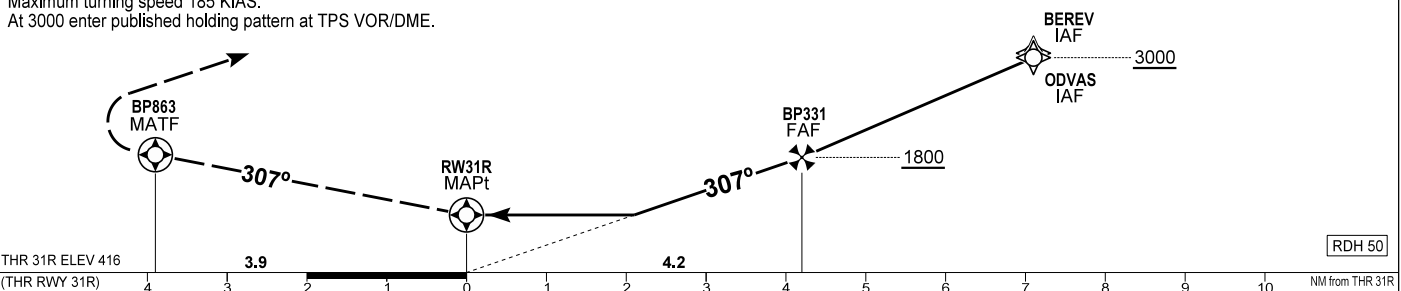
BUDAPEST APP 122.980 123.860 BUDAPEST GROUND 121.905  
BUDAPEST TOWER 119.510 BUDAPEST DELIVERY 134.540  
BUDAPEST INFORMATION (NORTH) 118.715 ATIS 132.380 (117.300)  
BUDAPEST INFORMATION (NORTH) 119.350, (NORTH-EAST) 134.855

BUDAPEST/LISZT FERENC  
RNP Y RWY 31R  
(ACFT CAT A, B, C)



**MISSED APPROACH**  
Climb to BP863.  
At BP863 turn right direct to TPS and continue climb to 3000.  
Maximum turning speed 185 KIAS.  
At 3000 enter published holding pattern at TPS VOR/DME.

TRANSITION ALTITUDE  
10000



OCA (H)	A	B	C
STRAIGHT-IN APPROACH	1300 (890)		

DIST THR / RW31R	NM	6.0	5.0	4.0	3.0
ALTITUDE	ft	2380	2060	1740	1420

**VISUAL APPROACH RWY 31R**  
**VMC**  
**CEILING - VISIBILITY**  
**1500' AGL - 5 KM**

Timing not authorized to define the MAPt.

GS	kt	60	90	120	150	180
BP331 - RW31R (4.2 NM)	min:sec	4:12	2:48	2:06	1:41	1:24
Rate of descent (319 ft/NM)	ft/min	320	480	640	800	960

CHANGE: radio communication frequencies

AD 2 LHBP INSTRUMENT APPROACH CHART RNP Y RWY 31R

via BEREV

PT	WP ID	Role	OverFly	BearIng/ (Len Dur)	Turn Direction	Altitude (FT)	IAS (KT)	VRT ANG	NAV PERF
IF	BEREV	IAF				+3000	-180		RNP APCH
TF	BP329	IF		222.5 T/3.3 NM		+2300	-180		RNP APCH
TF	BP331	FAF		282.5 T/3.4 NM		+1800	-165		RNP APCH
TF	RW31R	MAPt	Y	312.4 T/4.2 NM		+466			RNP APCH
TF	BP863	MATF	Y	312.3 T/3.9 NM					RNP APCH
DF	TPS				R	@3000	-185		RNP APCH
HM	TPS	MAHF		251.0 T/1 min	L	@3000	-230		RNP APCH

via ODVAS

PT	WP ID	Role	OverFly	BearIng/ (Len Dur)	Turn Direction	Altitude (FT)	IAS (KT)	VRT ANG	NAV PERF
IF	ODVAS	IAF				+3000	-180		RNP APCH
TF	BP328	IF		042.5 T/4.2 NM		+2300	-180		RNP APCH
TF	BP331	FAF		342.5 T/3.4 NM		+1800	-165		RNP APCH
TF	RW31R	MAPt	Y	312.4 T/4.2 NM		+466			RNP APCH
TF	BP863	MATF	Y	312.3 T/3.9 NM					RNP APCH
DF	TPS				R	@3000	-185		RNP APCH
HM	TPS	MAHF		251.0 T/1 min	L	@3000	-230		RNP APCH

WAYPOINT COORDINATES SEE: AD 2.22.